

The Dirt | November, 2023

Mobile County Master Gardeners



The President's Message by Harry Surline

On October 4th, **Dr. Todd Lasseigne**, Director, Bellingrath Gardens talked to us about the past, current, and future, at Bellingrath Gardens. His talk was very interesting and enjoyable. Dr. Lasseigne talked about the renovating and adding more scenes at the “Magic Christmas in Lights” at Bellingrath. I encourage all of you who are not members of Bellingrath Home and Gardens to join.

Carol Williams has arranged for Master Gardeners to have a table at the “Boo at Bellingrath” on October 28, between 1:00 pm and 6:00 pm. Call Carol if you are interested.

On November 1, the first Wednesday in November, **Joel Potter**, our Urban Regional Extension Agent will be talking about “Replacing Winter Damaged Trees and other Tree Topics”. Given our Mobile weather, this is an important topic and attending will be worthwhile.

The October President's comments had the wrong date for General Meeting and the correct date is November 1. The Board of Directors voted to have the Board of Directors meeting on the first Tuesday of each month to have an up-to-date financial report for the board meeting. It was also decided to have the general meetings moved to the second Tuesday of each month, starting January 1, 2024. The **Board of Directors** will meet for the last 2023 meeting on Tuesday, November 7 at 10:00 am at the Jon Archer Center small auditorium.

On-the-Same-Page-Workshops

On October 13th, the On-Same-Page Workshop participants worked in the Dream Garden cleaning the grounds, adding pine straw, pruning shrubs and trees, and setting out new plants. I encourage all of you who haven't visited the Dream Garden recently to take some time and wander through the Gardens. I think the Dream Garden looks the best it has been since I became a Master Gardener in 2018. **Marsha Stolz** and her volunteers plus the current interns have done a great job and need to be congratulated.

Remaining On-Same-Page Workshops

October 27th – The True Meaning of Organic

November 3rd – What does it mean to be a Master Gardener?

Volunteers

On January 1, 2024, reporting of the volunteers' hours will change. Categories will be different. **Please log all your 2023 hours by December 31.**

Intern Class 2023

MCMG
Officers



President
Harry Surline
251.605.4667
h.surline@gmail.com

Vice President
Carol Williams
251.367.0473
readingweeder72@hotmail.com

Rec Secretary
Karen Ruckart
251.377.2312
kzruckart@gmail.com

Corr Secretary
Brenda Howard
251.423.3108
eeks89tl@gmail.com

Treasurer Jane
Finley
251.605.0625
janefinley@bellsouth.net



On November 16th, the intern class of 2023 will give their intern presentations and graduate. This class has shown a great deal of initiative along with enthusiasm. After the presentations, the interns will be treated to lunch given by their mentors.



Annual Awards Banquet

On December 10th, we will hold our annual awards banquet, congratulating our MGs for their service this year. We will also celebrate our interns completing their class, and for those who have met all the requirements, becoming Master Gardeners. Please plan to come and show your support for the incoming Master Gardeners and celebrate Mobile County Master Gardeners 2023 achievements.

Continued below...

~~~~~Harry's Corner~~~~~

Riddle-for-October

What runs around a garden and never moves?

The answer is "A fence" and was answered by **Rynn Toifel**. Congratulations Rynn!

Riddle for next month (submitted by Lydia Criswell) Thank you Lydia!

"The more of me you take, the more of me you leave behind! What am I"?

Send your answer to the gardening question to h.surline@gmail.com.

All Photo sources: Mobile County Master Gardeners.

What has Crew 22 been up to lately?

They continue to brighten the lives of Mulherin residents with autumnal decor. Mulherin is fortunate to have the Crew hovering over them. Pictured below are some of the Crew ladies, **Carol Mackey, Mary Ann Tomlin, Carolyn Rooks, Lisa Davis, and Kathy Deckbar**.



Chronicles by Barbara Boone

The best news ever! Finally some cooler temps are here and more are heading our way and just in time for all the Fall activities ongoing.

Jack LeCroy presented more "On the Same Page"

sessions on weeds, how to enter volunteer hours on line, and how to respond to client questions. The initiative to have MGs enter their hours is an important issue, as recorded volunteer hours mean financial benefits for Extension. Keep in mind hours recorded will change in January, 2024, so stay alerted because more training for volunteer input is ongoing. In the meantime, contact **Cindy Findlay** or **Emily Arellano** for any assistance with inputting hours.

Sept 27 interns **Margaret Henderson, Kristin Coats, Debra Morrow, and Alissa Gochey** met at **Cindy Findlay's** carport and helped white tip pinecones for future Greenery Sale items. In the meantime, **Nina Ward, Theresa Davidson, Marion Platte** painted okra pods for decorations to be sold at the sale. Assistance by **Cindy, Barbara Boone, and Paula Reeves.**

October 2 **Catherine "Mo" Moates** and her team collected greenery to be used for the design workshop held at JAC October 5. Participating in the collection were interns **Todd Golomb, Ted Atkinson, Margaret Henderson, Gudrun Russell, Paul Barnes,** and MGs **Mariana Parker, and Leslie Maycock.** The workshop on October 5 was facilitated by **Joyce Petty,** owner of Atmore Flower Shop. The word is we have some talented designer interns in our midst.

On October 11 **Alice Marty** and **Leslie Maycock** spoke to Baldwin County Master Gardeners about winter sowing, specifically tomatoes. Alice presented a slide presentation to the group and Leslie demoed to the group, both well received by BCMGs.

October 18 was the date for 35 MG early birds (06:00) traveling by bus to Auburn University. While there MGs toured the Davis Arboretum led by the facility Director, Morgan Pendergrass, and members of her staff. The arboretum is a true gift to visitors, highlighting Alabama native plants, oaks, a pitcher bog, water falls, and sand dunes. Next the group was guided to the Freight Farm where produce and edible flowers are grown to supply Auburn eating establishments. Some of that produce may have been consumed in a tasty lunch at a close by food court. A tour of the Rooftop Garden was next which showcased cool seasonal veggies, herbs, and flowers. Imagine a pristine environment several stories off the ground free of insects except abundant pollinators. Of course a shopping excursion followed at the Botanic in Opelika, home to beautiful plants, shrubs, gift shop, and an outdoor restaurant. Special thanks to **Carol Williams, Diane Anthony, and Jack LeCroy** for the planning and logistics for this trip. See photos below. OK, this U. of Alabama graduate has to say it...**War Eagle!**

~~~~~

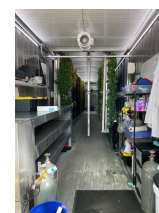
We are all busy right now, but don't forget to be mindful of your garden. Keep on planting with love and harvesting with wonder and joy.



Happy Trails to you!



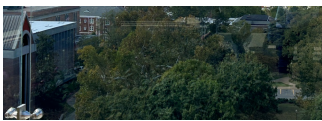
Until we meet again!



Freight Farm

Rooftop AU campus

Visit to Botanic



Campus cotton patch



Arboretum oak demo

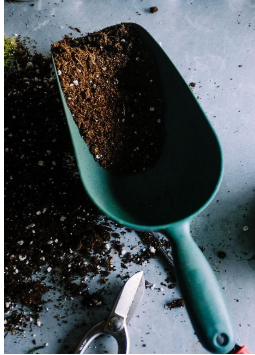


Rooftop garden demo

Arboretum gazebo



## The 3 Rs: Recycle, Repurpose, Reuse



Have you ever wondered if potting soil in containers is reusable? The resounding answer is YES! The key to reusing soil is to add back what it needs to be nutrient-rich and fertile. How to do this? Read on...

One good option is to create a compost pile dedicated to rejuvenate old potting soil. Add components that will decompose in this separate pile to include the old soil, chopped roots and all, and container foliage. Adding worm castings or aged manure to this pile really recharges this soil medium for another growing season. Just confirm manure is not "hot."



However, be mindful of one caveat: if the plant(s) growing in the old soil was compromised with bacteria, fungus, or virus, DO NOT REUSE! In fact, discard and apply container and tool sanitation to avoid contamination for further use.

As a gardener, the 3Rs are a win-win-win because they can save money and enhance sustainability.



Sources:  
Nat'l Gardening Assoc., Charlie Nardozzi, editor  
Aces.edu  
LSU Extension  
Oklahoma Extension



## Master Gardener of the Month by Carol Williams

Our MCMG Master Gardener of the Month, **Cindy Findlay**, '21, is a retired surgical nurse who learned of our program from two MGs she worked with, **Sharon Chambliss**, '20, and **Vicki Tindle**, '19. Both encouraged Cindy to join when she retired because they enjoyed being MGs. Cindy found the same enjoyment as an intern and has been a busy volunteer since. Along with **Barbara**

**Boone**, she leads the Pinecone Party (Coming up November 17!) where MGs create shiny, sparkly, and beautiful embellishments for arrangements sold in our annual Greenery Sale. Cindy expressed an interest in our MG corner of the office, so she is now our office manager and spends several hours each week making

sure that supplies and information are accessible as well as helping MGs learn to enter hours or work Helpline in the office. She also helps **Catherine McCleod** with our MG-branded sales at general meetings. Twice a year, Cindy participates in Alabama Master Gardeners State Advisory Council. She travels to their meeting at Petals from the Past, alternately with **Carol Dorsey**, and reports to our Board of Directors the information, projects, and plans the officers of AMGA want to share with our local associations. Cindy volunteers often for Master Gardeners and by conscientiously entering her hours, she has earned our Master Gardener of the Month award for a second time!



## A History of Grandma's Apple Pie

Out of the kitchen in my grandmother's house wafted many good smells but none better than the scent of an apple pie baking in the oven. When an apple pie bakes, we smell the apple's best friend, cinnamon, but the main ingredient is the apple.

Back in Grandma Abbie's day, the Piggly Wiggly offered only a couple of apple varieties such as a Delicious or Winesap, but in the modern apple world these two varieties are not even the tip of the iceberg in numbers, not to mention that these apples were often bland and mealy.

Though the apple is not mentioned in the Old Testament specifically, the fruit that is the apple got a bad rap since the apple is hinted to be the evil "forbidden fruit" for Adam and Eve. Hint: apple genus is *Malus* which translates to bad or evil.

There are at least 7,500 apple varieties available today, however wherever in the world you are crunching on an apple, their distant relatives all originated thousands of years ago from Kazakhstan, located between China and Central Asia. This is a very rugged, dense, mountainous region where apples still exist today in various sizes, shapes, and tastes, sweet to sour. One tree still living in this area has been verified to be over 300 years old.

Seeds from these fruit precursors were spread by animals and birds over the millenia to all of China, then to the Middle East, later to Europe, and then to the Americas. Once in what was to become the U.S., a man by the name of John Chapman, a.k.a. Johnny Appleseed, started orchards by carrying bags of seeds all throughout the West.

The number of orchards in the U.S. grew and continue to grow by grafting varieties and genetics, yet only a relative few varieties make up the marketplace. Among those popular apples available commercially are Gala, Honeycrisp, Braeburn, Fuji, Pink Lady, Granny Smith, and others specific to individual taste and texture. There are a few reasons why commercial varieties are held to a certain number and standard:

- shape, size, color
- firm flesh for shipping
- storage
- high yields

A little known fact is that the number of apple varieties lagged from Johnny Appleseed's day onward because apples were largely used for cider, since it was safer than water for drinking. Even later with safer water availability, then entered Prohibition which outlawed cider, leaving apple consumption in the U.S. for eating.

But probably one of the main reasons for commercial numbers is the high cost of developing a new apple and the number of years (10 to 20 years is not uncommon) to do so. Along with the number of years to produce a commercial apple, our location in Alabama is not conducive to apple growing because apples require a large number of chill hours which our weather does not provide.

So, remember the next time you bite into a juicy, crunchy, sweet or tart apple, remember that even though that apple may be keeping the doctor away, it wasn't developed in a day.

By Dirt Diva

Sources:

*Eating to Extinction*, Dan Saladino, 2022

"The History of the Forbidden Fruit" Nat Geo, Rebecca Rupp, 2014.

*Heritage Apples: Unusual Flavors, Colorful Histories*, Suzanne DeJohn, National Gardening Assoc., Charlie Nardozzi, ed.



### Bugs 'n' Hisses!

Not the only insect to invade homes in the Fall seeking warmth, pictured here is a brown marmorated stink bug. BMSBs, as they are known, emit an odor just like their other stink bug cousins when they are squashed. Not only a household pest, BMSBs are also an agricultural and commercial problem due to feeding on

vegetables, field crops, and fruit. To prevent these insects from invasion in your home, utilize mint or garlic oil.

Compiled by Dirt Diva

Source: [aces.edu/Fall invasive insects](https://aces.edu/Fall%20invasive%20insects)

### Fruit o' the Month

Cinderellas, Snowballs, Goblins, Cheeseballs and Knuckleheads...what are they? They are all different varieties of pumpkins, different shapes, colors, and sizes, but all members of the genus *Cucurbita*, Latin for "gourd." Useful for decor, eaten in desserts and savory dishes, these fruits are chock full of vitamins and minerals, and don't forget the roasted seeds as a tasty snack. Above all, don't forget to hurry on down to your local coffee shop for that seasonal PSL, Pumpkin Spice Latte!



### Greenery Sale Update!

Planning for the 2023 Greenery Sale continues. As you can imagine, events of this nature require many moving parts for a successful outcome: materials/inventory, classes for material use, recruitment of help, liaison with Mobile Botanical Gardens, ordering, accounting and payment methods, marketing and public information.

There are some Greenery Sale changes to be shared now:

- Okra pod collection is ongoing and moving forward will continue all year.
- Orders for wreaths and other supplies were made week of Oct. 9.
- Design workshop was held Thursday, Oct 5.
- **The online Greenery Sale shop will open October 23.**
- **Pre-order cutoff date will be November 20. HARD DATE!!**

- Pre-orders will be picked up at Jon Archer. Please note this change!
- Further sales will be on the patio at MBG (extra Cuppa Cheer, wreaths).
- Contact Paula Reeves 251-463-4560 or Emily Arellano 251-366-4558 for further questions.

The Pinecone Party will be held November 17 with setup the afternoon of November 16. This year "Pinecone Partiers" will have the option of a Pinecone Party T-shirt. Purchase deadline was October 20 with all sizes available for \$15. Order sheets will be available soon for MGs and interns. Pictures immediately below show the output and fun from a previous Pinecone Party.



Pinecone Party 2022



### Master Gardeners!

It is now October, almost November, and you know what that means? It means it's time to start paying your dues for 2024.

The amount of your dues is unchanged from last year -- \$25 total, with \$10 of that amount going to the Alabama Master Gardener Association. We have to forward that State portion by DECEMBER 31<sup>st</sup> for you to be eligible to attend any State level committees or functions.

The Mobile County Master Gardeners will have a full agenda for 2024. We will have in-person meetings at the Archer Center again this year. In addition, we will have "Field Trip" meetings on occasions. The on-going revitalization of the Dream Garden, along with the Spring Festival and the Greenery Sale will offer lots of opportunities for you to work with plants and other gardeners. There are a lot of promising and rewarding activities going on for this year, and your renewal of your active membership is only \$25 – that is a DEAL!

You can pay your dues by one of two ways this year.

- 1) You can pay your dues online in a simple process with no postage expense. Simply follow steps electronically a-e:
  - a. Go to <https://www.mobilecountymastergardeners.org/>
  - b. Pull down the "More" menu on the right hand end of the tool bar (it's right before the Facebook Logo)
  - c. Click on "MG-ONLY Membership Dues"
  - d. Enter your information and make the payment
  - e. Please send **Catherine 'Mo' Moates** an email at memo366@att.net to let me know you paid online – it just lets me (**Bob Howard**) know when I need to get to work, but you will have done your part. Be sure to let me know if you have any changes to your contact information – address, phone number, email, etc.
- 2) Or you can still use the old way – just take a few minutes to write a check for your dues of \$25.00 payable to **Mobile County Master Gardener Association** (or MCMGA, for short). Then mail your check to Catherine Moates  
1360 Repoll Rd  
Mobile, AL 36695

We are looking forward to a great year for MCMG in 2024. We hope to hear from you SOON!

## From the Greenhouse:

### Gardening ABCs



**Editor's note:** Again we challenge ourselves with the understanding or recall of horticultural terms. Perfect for cocktail party banter. Read on:

**Hardscaping**-Any man made structure made of an inanimate material such as wood, stone, brick, pavers, or gravel.

**Meadow scaping**-An alternative to grass lawns where native plants and flowers replace grass.

**Xeriscaping**-A form of landscaping that incorporates drought resistant plants such as cacti.

**Lasagna planting**--Layered planting where plants are above the soil while different composting materials are stratified below.

**OMRI**--Organic Materials Review Institute-reviews products according to organic standards. Designated as Listed and Certified.

**Tilth**--General health of soil including nutrients, water, and aeration.

Compiled by Dirt Diva

Source:

*A to Z Encyclopedia of Plants and Gardening*, numerous editors



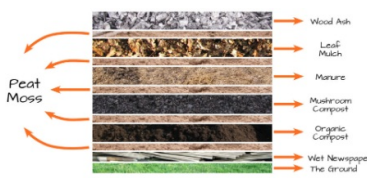
Hardscaping



Meadowscaping



Xeriscaping



Lasagna Gardening



OMRI



Tilth

## In The Loop

by Theresa Davidson

## Upcoming Volunteer Opportunities

for Master Gardeners and Interns





### **November MCMG General Meeting**

Jon Archer Center

Joel Potter, ACES Urban Regional Extension Agent,  
Certified Arborist

**Wednesday, Nov. 1:** 10:00 am; Social Time 9:30

Topic: Replacing Freeze Damaged Trees

Harry Surline, 251.605.4667, h.surline@gmail.com

**CEU for speaker, MGA/AMGA meeting, .5 business  
portion**



### **November Board of Directors Meeting**

Jon Archer Center

**Tuesday, November 7,** 10:00 am

Harry Surline, 251.605.4667, h.surline@gmail.com

**MGA/AMGA Administration**



### **First Friday at the Gardens:**

November 3 10:30 am

Cullan Duke, JD, CTFA, TEP with Regions Private  
Wealth

Management: Charitable planning, legacy gifts-

MBG, 5151 Museum Dr., Larkins Classroom

acashin@mbgardens.org to register: Free to MBG

members, regular admission for nonmembers

**CEU**



### **On the Same Page: Workshops for MCMG's**

Jon Archer Center

Jack LeCroy, 251.574.8445, jml0003@auburn.edu

Fridays, 10:30 am -11:30 am

November 3: What does it mean to be a Master  
Gardener

**CEU**



### **Monthly Garden Zoom Class**

Jack LeCroy

3rd Thursday of the month, 6-7 pm, November 16

Diane Anthony, jda0002@aces.edu, 251.574.8445 or

www.aces.edu/go/gardenzoom to register

**CEU**



### **Market in the Park**

Hand out Information and answer gardening questions at  
the Master Gardener tent in Cathedral Square on

Saturdays: November 4, 11, and 18; 7:30 AM to 12 Noon.

2 hour shifts are available -- and flexible.

Contact: Robert Howard Tel: 251-423-

2605 Email: rwhoward51@gmail.com

**Community Special Event**



### **How to Make Bows and Swags**

Learn how to make and swags from our in-house expert, Master Gardener, Nina Ward. Participation is encouraged for anyone who wants to be part of the Greenery Design Days

Jon Archer

Thursday, November 2, 1:30 pm (after Intern class)

Paula Reeves, 251.463.4558, paulareeves7@gmail.com

**Fundraiser**

---



### **Okra/Cotton Boll Party**

Friday, November 3

Jon Archer Center

11:30 am after "On the Same Page"

Create ornaments from okra and cotton bolls.

No "artistic" skills needed! Add details to already painted okra.

Theresa Davidson, 251.510.4961,

theresadavidson80@gmail.com

Marion Platt, 251.610.9748, mdplatt54@gmail.com

Barbara Boone, 251.680.8263, boonebama@live.com

Cindy Findlay, 251.786.4245, cndyfndly@att.net

**Fundraiser**

---



### **SET-up for Pine Cone Party**

Set up tables and supplies for the Pine Cone Party

Thursday, November 16

After final Intern Class

Barbara Boone, 251.680.8263, boonebama@live.com

Cindy Findlay, 251.786.4245, cndyfndly@att.net

**Fundraiser**

---



### **Pine Cone Party**

Paint pine cones, dried okra, and lotus seed pods, topping all with glitter! Create the accessories for our wreaths, swags, mailbox toppers, and Cuppa Cheers-for the Christmas Greenery Sale

Friday, November 17

Barbara Boone, 251.680.8263, boonebama@live.com

Cindy Findlay, 251.786.4245, cndyfndly@att.net

**Fundraiser**

---



### **Collect Greenery for the Greenery Sale**

Saturday, November 25, 8:30 am

Auburn Research Center, 411 N. McGregor 36608

MoMoates 251.366.6163 memo366@att.net

**Fundraiser**



### **Wash Greenery for the Greenery Sale**

Sunday, November 26, Time to be announced

Jon Archer Center

Mo Moates, 251.366.6163, memo366@att.net

**Fundraiser**

---



### **Floral Design Days for Christmas Greenery Sale**

Design mailbox toppers, wreaths, and Cuppa Cheer

Jon Archer Large Auditorium

Monday, Tuesday, Wednesday, November 27, 28, 29

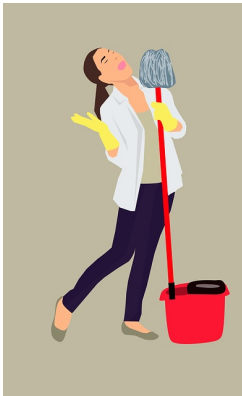
9:00 am to 3 pm (Work 1, 2, 3 hours, etc., as much as you would like. You don't have to work the whole day.)

Paula Reeves, 251.463.4558, paulareeves7@gmail.com

Emily Arrelano, 251.366.4558, edparel70@gmail.com

**Fundraiser**

---



### **CLEAN-UP CREW for Design Days**

Tidy up the auditorium while the designers work their magic

Jon Archer

Monday, Tuesday, Wednesday Nov. 27, 28, 29

2 Shifts: 9:00 am-12:00 pm, 12:00 pm-3:00 pm

Brenda Howard, 251-423-3108 eeks89tl@gmail.com

**Fundraiser**

---



### **Load ARRANGEMENTS, TRANSPORT to MBG, SET UP tables on Patio, DISPLAY arrangements**

Jon Archer to load, MBG to unload

Thursday, November 30, 10:00 am -2:00 or 3:00 pm?

**Fundraiser**

---



### **Customer Pick Up of Online Orders**

Jon Archer

Thursday, November 30, **Time to be announced**

Robert Howard 251-423-2605 rhoward51@gmail.com

**Fundraiser**



### **Holiday Market at the Gardens**

MBG Patio outside Gift Shop

Friday and Saturday, December 1 and 2

Paula Reeves, 251.463.4558, paulareeves7@gmail.com

Emily Arrelano, 251.366.4558, edparel70@gmail.com

**Fundraiser**

---

## **Ongoing Volunteer Opportunities**

**for Master Gardeners and Interns**

---



### **Prepare Snacks for MG General Meetings:**

Jon Archer Center

Lydia Criswell, 251.610.5543, criswells2@mchsi.com

**MGA/AMGA Meeting: Add your round trip drive time to the meeting time.**

---



### **Orchid Society Meeting**

Mobile Japanese Garden meeting room, 700 Forest Hill

4th Sunday of the month (except June & Dec), 2:00

Lynn Coleman, 251.622.3939, lynncolman411@gmail

**CEU for the presentation**

---



### **Gulf Coast Herb Society**

Mobile Botanical Gardens 4th Tues. of the month,

(except July and Nov.), 5:30 pm

Beth Poates, 251.342.6508, poates57@hotmail.com

**CEU for presentation**

---



### **Camellia Club of Mobile**

Jon Archer Center

2nd Sun of the month: Sept. 2023- April 2024, 2:00 pm

mobilecamellia.org, Camellia Club of Mobile FB Group

**CEU for presentation**

---

### **K Sawada Camellia Club**

Most meetings at Mobile Botanical Gardens

1st Sunday of the month: Nov. 5, 2023- March 202

2:00 pm

Vaughn Drinkard, vdrinkard@yahoo.com

**CEU for presentation**



---

### **Mobile Japanese Garden**

700 Forest Hill Drive

Volunteer your MG skills any morning/afternoon.

Text Don to coordinate!

Don Fry, 251.422.8466, don.fry@comcast.net,

mobilejapanesegarden.com

***Community Landscape***



---

### **Community Gardens:**

Grow More Give More with Mobile Urban Growers:

mobileurbangrowers.org

Community gardens in Midtown, Downtown, + other neighborhoods, school sites. Search FB "Mobile Urban Growers" and Community Gardens

Carol Dorsey, 251.209.3483, bcdorsey63@gmail.com

mobileurbangrowers@gmail.com

***Helping Garden***



---

### **Mobile Medical Museum**

Robert Thrower Medicinal Garden

Curating and maintaining everchanging collection +

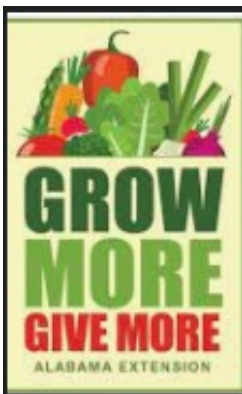
gardening with Full Life Ahead, serving adults with

intellectual disabilities, usually on Wednesdays

1664 Springhill Avenue

Carol Dorsey, 251.209.3483, bcdorsey63@gmail.com

***Helping Garden***



---

### **Grow More Give More**

Statewide Master Gardeners initiative to encourage food gardening and sharing produce

2 Ambassadors needed: attend meetings, target areas

for grant development/grant funds fulfillment

Carol Dorsey, 251.209.3483, bcdorsey63@gmail.com

***Community Food***

---

### **Speakers Bureau**

Paul Ezelle, 251.402.1798, paulezelle@gmail.com

Bob Howard, 251.423.3108, rhoward51@gmail.com

***Program or workshop for public***



---

**Office Manager/Phone Lines/MG Helpline**  
Cindy Findlay, 251.786.4245, cndyfindly@att.net



---

**DREAM GARDEN:** Join a Garden Room (**See below**)  
Jon Archer Center  
Marsha Stolz, 251.689.5993, marshastolz@msn.com  
Contact Marsha **or** a Garden Leader to volunteer and  
work as needed.  
***Education/Demonstration***

### **The Gardens:**

#### **Grandma's Pass Along Garden**

Catherine Moates, 251.366.6163, memo366@att.net  
Olivia Reinhaus, 251.458.7383, omcvea@gmail

#### **Native Garden**

Melissa Nichols, 251.680.7779, indigigardener@gmail.com

#### **Shade Garden**

Bob Howard, 251.423.3108, rwhoward51@gmail.com

#### **Vegetable Garden**

Marsha Stolz, 251.689.5993, marshastolz@msn.com  
Mary Ann Days, 251.391.5806, masdays@comcast.net

#### **Herb Garden**

Mary Ann Days, 251.391.5806, masdays@comcast.net

#### **Cottage Garden & Formal Garden**

Glenda Eady, 251.342.4248, jerryeady2@comcast.net

#### **Building Garden**

Marsha Stolz, 251.689.5993, marshastolz@msn.com

---

### **Mission Statement**

The Alabama Master Gardener Volunteer Program is an educational outreach program provided and administered by the Alabama Cooperative Extension System.

The Alabama Cooperative Extension System (Alabama A & M University and Auburn University) is an equal opportunity and employer. [www.aces.edu](http://www.aces.edu)



Mobile County Master Gardeners | 1070 Schillinger Rd. N., Mobile, AL 36608 251.574.8445

[Unsubscribe mobilemastergardeners@gmail.com](mailto:mobilemastergardeners@gmail.com)

[Update Profile](#) | [Constant Contact Data Notice](#)

Sent by mobilemastergardeners@gmail.com